



**PHYSICS
WALLAH**

JEE MAIN 2026

SESSION-01

Date: 24-01-2026

Shift-01

SECTION-I (PHYSICS)

Single Correct Type Questions

1. A cylindrical block of mass M and area of cross section A is floating in a liquid of density ρ and with its axis vertical. When depressed a little and released the block starts oscillating. The period of oscillation is

(1) $2\pi\sqrt{\frac{\rho A}{Mg}}$ (2) $\pi\sqrt{\frac{2M}{\rho Ag}}$
 (3) $\pi\sqrt{\frac{\rho A}{Mg}}$ (4) $2\pi\sqrt{\frac{M}{\rho Ag}}$

2. Match the Column-I with Column-II

Column-I		Column-II	
A	Radio-wave	I	is produced by Magnetron valve
B	Micro-wave	II	due to change in the vibrational modes of atoms
C	Infrared-wave	III	due to inner shell electrons moving from higher energy level to lower energy level
D	X-ray	IV	due to rapid acceleration of electrons

Choose the correct answer from the options given below:

- (1) A-IV, B-I, C-II, D-III
 (2) A-IV, B-II, C-I, D-III
 (3) A-IV, B-III, C-I, D-II
 (4) A-II, B-IV, C-III, D-I
3. The electrostatic potential in a charged spherical region of radius r varies as $V = ar^3 + b$, where a and b are constants. The total charge in the sphere of unit radius is $\alpha \times \pi a \epsilon_0$. The value of α is (permittivity of vacuum is ϵ_0)
- (1) -8 (2) -9
 (3) -12 (4) -6
4. An unpolarised light is incident at an interface of two dielectric media having refractive indices of 2 (incident medium) and $2\sqrt{3}$ (medium) respectively. To satisfy the condition that reflected and refracted rays are perpendicular to each other, the angle of incidence is
- (1) 60° (2) 30°
 (3) 10° (4) 45°
5. A boy throws a ball into air at 45° from the horizontal to land it on a roof of a building of height H . If the ball attains maximum height in 2 s

and lands on the building in 3 s after launch, then value of H is _____ m. ($g = 10 \text{ m/s}^2$)

- (1) 10 (2) 20
 (3) 15 (4) 25
6. Three charges $+2q$, $+3q$ and $-4q$ are situated at $(0, -3a)$, $(2a, 0)$ and $(-2a, 0)$ respectively in the xy plane. The resultant dipole moment about origin is
- (1) $2qa(3\hat{j} - \hat{i})$ (2) $2qa(7\hat{i} - 3\hat{j})$
 (3) $2qa(3\hat{i} - 7\hat{j})$ (4) $2qa(3\hat{j} - 7\hat{i})$
7. Two electrons are moving in orbits of two hydrogen like atoms with speeds $3 \times 10^5 \text{ m/s}$ and $2.5 \times 10^5 \text{ m/s}$ respectively. If the radii of these orbits are nearly same then the possible order of energy states are _____ respectively.
- (1) 9 and 8 (2) 8 and 10
 (3) 6 and 5 (4) 10 and 12
8. Two resistors of 100Ω each are connected in series with a 9 V battery. A voltmeter of 400Ω resistance is connected to measure the voltage drop across one of the resistors. The voltmeter reading is _____ V.
- (1) 2 (2) 4
 (3) 4.5 (4) 3
9. For the series LCR circuit connected with 220 V, 50 Hz a.c source as shown in the figure, the power factor is $\frac{\alpha}{10}$. The value of α is
- 220 V, 50 Hz

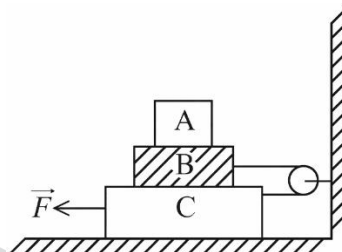
$X_L = 70 \Omega$ $X_C = 150 \Omega$ 60Ω
- (1) 6 (2) 4
 (3) 8 (4) 10
10. A spring of force constant 15 N/m is cut into two pieces. If the ratio of their length is 1:3, then the force constant of smaller piece is _____ N/m.
- (1) 45
 (2) 60
 (3) 20
 (4) 15

20. A brass wire of length 2 m and radius 1 mm at 27°C is held taut between two rigid supports. Initially it was cooled to a temperature of -43°C creating a tension T in the wire. The temperature to which the wire has to be cooled in order to increase the tension in it to $1.4T$, is _____ $^{\circ}\text{C}$.
- (1) -71 (2) -80
 (3) -65 (4) -86

Integer Type Questions

21. A short bar magnet placed with its axis at 30° with an external field of 800 Gauss, experiences a torque of 0.016 N.m. The work done in moving it from most stable to most unstable position is $\alpha \times 10^{-3}$ J. The value of α is
22. A gas of certain mass filled in a closed cylinder at a pressure of 3.23 kPa has temperature 50°C . The gas is now heated to double its temperature. The modified pressure is _____ Pa.

23. Sixty four rain drops of radius 1 mm each falling down with a terminal velocity of 10 cm/s coalesce to form a bigger drop. The terminal velocity of bigger drop is _____ cm/s.
24. In the given figure the blocks A, B and C weigh 4 kg, 6 kg and 8 kg respectively. The co-efficient of sliding friction between any two surfaces is 0.5. The force F required to slide the block C with constant speed is _____ N. (Use $g = 10 \text{ m/s}^2$)



25. A voltage regulating circuit consisting of Zener diode, having break-down voltage of 10 V and maximum power dissipation of 0.4 W, is operated at 15 V. The approximate value of protective resistance in this circuit is _____ Ω .

SECTION-II (CHEMISTRY)

Single Correct Type Questions

26. Given below are two statements:
Statement I: $\text{K} > \text{Mg} > \text{Al} > \text{B}$ is the correct order in terms of metallic character.
Statement II: Atomic radius is always greater than the ionic radius for any element.
 In the light of the above statements, choose the correct answer from the options given below
- (1) Both Statement I and Statement II are true
 (2) Statement I is true but Statement II is false
 (3) Statement I is false but Statement II is true
 (4) Both Statement I and Statement II are false
27. Given below are two statements:
Statement I: The number of paramagnetic species among $[\text{CoF}_6]^{3-}$, $[\text{TiF}_6]^{3-}$, V_2O_5 and $[\text{Fe}(\text{CN})_6]^{3-}$ is 3.
Statement II: $\text{K}_4[\text{Fe}(\text{CN})_6] < \text{K}_3[\text{Fe}(\text{CN})_6] < [\text{Fe}(\text{H}_2\text{O})_6]\text{SO}_4 \cdot \text{H}_2\text{O} < [\text{Fe}(\text{H}_2\text{O})_6]\text{Cl}_3$ is the correct order in terms of number of unpaired electron(s) present in the complexes.
 In the light of the above statements, choose the correct answer from the options given below
- (1) Both Statement I and Statement II are false
 (2) Both Statement I and Statement II are true
 (3) Statement I is true but Statement II is false
 (4) Statement I is false but Statement II is true

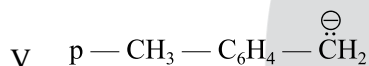
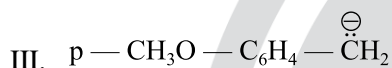
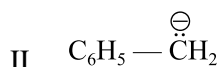
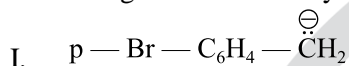
28. Consider three metal chlorides x, y and z, where x is water soluble at room temperature, y is sparingly soluble in water at room temperature and z is soluble in hot water. x, y and z are respectively
- (1) AgCl , Hg_2Cl_2 and PbCl_2
 (2) AlCl_3 , PbCl_2 and BaCl_2
 (3) MgCl_2 , AgCl and AlCl_3
 (4) CuCl_2 , AgCl and PbCl_2
29. Consider a mixture 'X' which is made by dissolving 0.4 mol of $[\text{Co}(\text{NH}_3)_5\text{SO}_4]\text{Br}$ and 0.4 mol of $[\text{Co}(\text{NH}_3)_5\text{Br}]\text{SO}_4$ in water to make 4 L of solution. When 2 L of mixture 'X' is allowed to react with excess of AgNO_3 , it forms precipitate 'Y'. The rest 2 L of mixture 'X' reacts with excess BaCl_2 to form precipitate 'Z'. Which of the following statements is CORRECT?
- (1) 0.2 mol of 'Z' is formed.
 (2) 0.4 mol of 'Z' is formed.
 (3) 'Y' is BaSO_4 and 'Z' is AgBr .
 (4) 0.1 mol of 'Y' is formed.

30. 'W' g of a non-volatile electrolyte solid solute of molar mass 'M' g mol⁻¹ when dissolved in 100 mL water, decreases vapour pressure of water from 640 mm Hg to 600 mmHg. If aqueous solution of the electrolyte boils at 375 K and K_b for water is 0.52 K kg mol⁻¹, then the mole fraction of the electrolyte solute (x₂) in the solution can be expressed as. (Given: density of water = 1 g/mL and boiling point of water = 373 K)

(1) $\frac{2.6}{16} \times \frac{M}{W}$ (2) $\frac{1.3}{8} \times \frac{W}{M}$

(3) $\frac{16}{2.6} \times \frac{W}{M}$ (4) $\frac{1.3}{8} \times \frac{M}{W}$

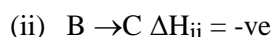
31. Arrange the following carbanions in the decreasing order of stability.



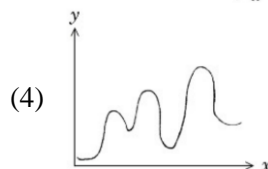
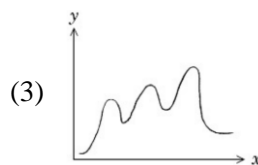
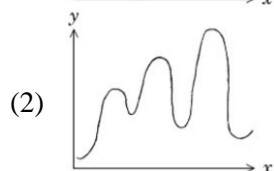
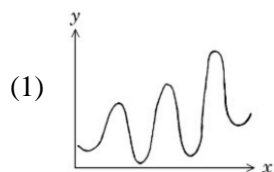
Choose the correct answer from the options given below:

- (1) IV > I > II > V > III
 (2) I > IV > II > V > III
 (3) I > II > IV > V > III
 (4) IV > II > I > III > V

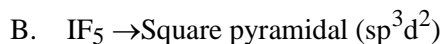
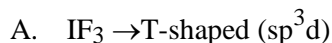
32. A → D is an endothermic reaction occurring in three steps (elementary).



Which of the following graphs between potential energy (y-axis) vs reaction coordinate (x-axis) correctly represents the reaction profile of A → D?



33. Among the following, the CORRECT combinations are



Choose the correct answer from the options given below:

- (1) B, C and D Only
 (2) A, B and C Only
 (3) A and B Only
 (4) A, B, C and D

34. At 27 °C in presence of a catalyst, activation energy of a reaction is lowered by 10 kJ mol⁻¹.

The logarithm of ratio of $\frac{k_{\text{(catalysed)}}}{k_{\text{(uncatalysed)}}}$ is....

(Consider that the frequency factor for both the reactions is same)

- (1) 1.741 (2) 17.41
 (3) 0.1741 (4) 3.482

35. Match the Column-I with Column-II

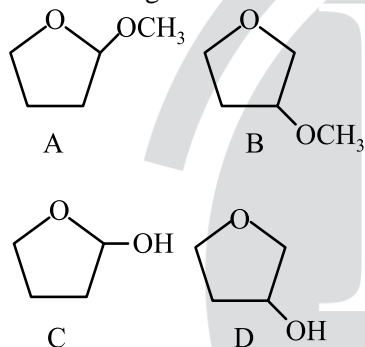
Column-I		Column-II	
Isothermal process for ideal gas system		Work done (V _f > V _i)	
A	Reversible expansion	I	w = 0
B	Free expansion	II	w = -nRT ln $\frac{V_f}{V_i}$
C	Irreversible expansion	III	w = -p _{ex} (V _f - V _i)
D	Irreversible compression	IV	w = -p _{ex} (V _i - V _f)

Choose the correct answer from the options given below:

- (1) A-II, B-I, C-III, D-IV
 (2) A-I, B-III, C-II, D-IV
 (3) A-IV, B-II, C-III, D-I
 (4) A-IV, B-I, C-III, D-II

36. Given below are statements about some molecules/ions. Identify the CORRECT statements.
- The dipole moment value of NF_3 is higher than that of NH_3 .
 - The dipole moment value of BeH_2 is zero.
 - The bond order of O_2^{2-} and F_2 is same.
 - The formal charge on the central oxygen atom of ozone is -1.
 - In NO_2 , all the three atoms satisfy the octet rule, hence it is very stable. Choose the correct answer from the options given below:
 - B & C Only
 - A, C & D Only
 - A, B, C, D & E
 - B, C & D Only

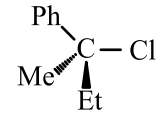
37. A student is given one compound among the following compounds that gives positive test with Tollen's reagent.



The compound is :

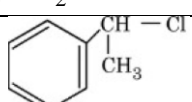
- C
 - A
 - B
 - D
38. Consider the following two reactions A and B.
- (A) c1ccc(O)cc1 $\xrightarrow{\text{Na}}$ Main Product + gas (x)
- (B) c1ccc(C(=O)O)cc1 $\xrightarrow{\text{NaHCO}_3}$ Main Product + gas (y)
- Numerical value of [molar mass of x + molar mass of y] is
- 88
 - 46
 - 160
 - 4

39. A solution is prepared by dissolving 0.3 g of a non-volatile non-electrolyte solute 'A' of molar mass 60 g mol^{-1} and 0.9 g of a non-volatile non-electrolyte solute 'B' of molar mass 180 g mol^{-1} in 100 mL H_2O at 27°C . Osmotic pressure of the solution will be _____. [Given: $R = 0.082 \text{ L atm K}^{-1} \text{ mol}^{-1}$]
- 1.47 atm
 - 1.23 atm
 - 0.82 atm
 - 2.46 atm

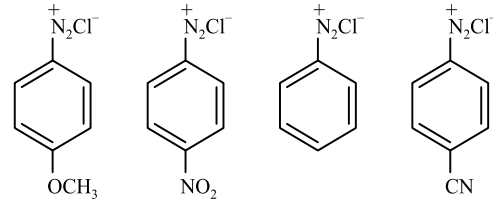
40. Given below are two statements:
- Statement I:** 'C - Cl' bond is stronger in $\text{CH}_2 = \text{CH} - \text{Cl}$ than $\text{CH}_3 - \text{CH}_2 - \text{Cl}$
- Statement II:** The given optically active molecule,  on hydrolysis gives a solution that can rotate the plane polarized light. In the light of the above statements, choose the correct answer from the options given below
- Both Statement I and Statement II are true
 - Statement I is false but Statement II is true
 - Both Statement I and Statement II are false
 - Statement I is true but Statement II is false

41. A hydroxy compound (X) with molar mass 122 g mol^{-1} is acetylated with acetic anhydride, using a large excess of the reagent ensuring complete acetylation of all hydroxyl groups. The product obtained has a molar mass of 290 g mol^{-1} . The number of hydroxyl groups present in compound (X) is:
- 2
 - 5
 - 3
 - 4

42. Match the Column-I with Column-II

Column-I		Column-II	
Chloro derivative		Example	
A	Vinyl Chloride	I	$\text{CH}_2 = \text{CH} - \text{CH}_2\text{Cl}$
B	Benzyl Chloride	II	$\text{CH}_3 - \text{CH}(\text{Cl})\text{CH}_3$
C	Alkyl Chloride	III	$\text{CH}_2 = \text{CHCl}$
D	Allyl Chloride	IV	

Choose the correct answer from the options given below:

- A-III, B-IV, C-II, D-I
 - A-IV, B-I, C-III, D-II
 - A-III, B-IV, C-I, D-II
 - A-I, B-II, C-IV, D-III
43. The correct stability order of the following diazonium salts is
- 
- $\text{C} > \text{D} > \text{B} > \text{A}$
 - $\text{C} > \text{A} > \text{D} > \text{B}$
 - $\text{A} > \text{B} > \text{C} > \text{D}$
 - $\text{A} > \text{C} > \text{D} > \text{B}$

44. Given below are two statements:

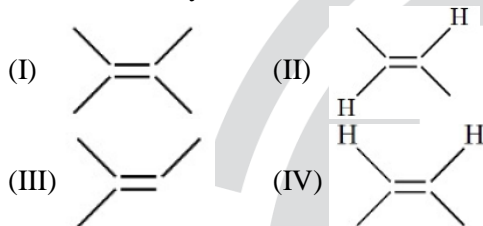
Statement I: Hybridisation, shape and spin only magnetic moment of $K_3[Co(CO_3)_3]$ is sp^3d^2 , octahedral and 4.9 BM respectively.

Statement II: Geometry, hybridisation and spin only magnetic moment values (BM) of the ions $[Ni(CN)_4]^{2-}$, $[MnBr_4]^{2-}$ and $[CoF_6]^{3-}$ respectively are square planar, tetrahedral, octahedral; dsp^2 , sp^3 , sp^3d^2 and 0, 5.9, 4.9.

In the light of the above statements, choose the correct answer from the options given below

- (1) Both Statement I and Statement II are true
- (2) Statement I is false but Statement II is true
- (3) Both Statement I and Statement II are false
- (4) Statement I is true but Statement II is false

45. Arrange the following alkenes in decreasing order of stability.



Choose the correct answer from the options given below:

- (1) I > III > IV > II
- (2) I > III > II > IV
- (3) III > II > I > IV
- (4) III > I > II > IV

Integer Type Questions

46. X and Y are the number of electrons involved, respectively during the oxidation of I^- to I_2 and S^{2-} to S by acidified $K_2Cr_2O_7$. The value of $X + Y$ is

47. The hydrogen spectrum consists of several spectral lines in Lyman series (L_1, L_2, L_3, \dots ; L_1 has lowest energy among Lyman series). Similarly it consists of several spectral lines in Balmer series (B_1, B_2, B_3, \dots ; B_1 has lowest energy among Balmer lines). The energy of L_1 is x times the energy of B_1 . The value of x is $\text{_____} \times 10^{-1}$ (Nearest integer)

48. In Dumas method for estimation of nitrogen, 0.50 g of an organic compound gave 70 mL of nitrogen collected at 300 K and 715 mm pressure. The percentage of nitrogen in the organic compound is _____ %. (Aqueous tension at 300 K is 15 mm).

49. Consider two Group IV metal ions X^{2+} and Y^{2+} . A solution containing 0.01 M X^{2+} and 0.01 M Y^{2+} is saturated with H_2S . The pH at which the metal sulphide YS will form as a precipitate is _____ (Nearest integer) (Given: $K_{sp}(XS) = 1 \times 10^{-22}$ at $25^\circ C$, $K_{sp}(YS) = 4 \times 10^{-16}$ at $25^\circ C$, $[H_2S] = 0.1M$ in solution, $K_{a1} \times K_{a2}(H_2S) = 1.0 \times 10^{-21}$, $\log 2 = 0.30$, $\log 3 = 0.48$, $\log 5 = 0.70$)

50. Electricity is passed through an acidic solution of Cu^{2+} till all the Cu^{2+} was exhausted, leading to the deposition of 300 mg of Cu metal. However, a current of 600 mA was continued to pass through the same solution for another 28 minutes by keeping the total volume of the solution fixed at 200 mL. The total volume of oxygen evolved at STP during the entire process is _____ mL. (Nearest integer) [Given: $Cu^{2+}(aq) + 2e^- \rightarrow Cu(s)$ $E_{red}^\circ = +0.34V$, $O_2(g) + 4H^+ + 4e^- \rightarrow 2H_2O$ $E_{red}^\circ = +1.23 V$, Molar mass of Cu = 63.54 g mol^{-1} , Molar mass of $O_2 = 32 g mol^{-1}$, Faraday Constant = 96500 C mol^{-1} , Molar volume at STP = 22.4 L]

SECTION-III (MATHEMATICS)

Single Correct Type Questions

51. From a lot containing 10 defective and 90 non-defective bulbs, 8 bulbs are selected one by one with replacement. Then the probability of getting at least 7 defective bulbs is

- (1) $\frac{67}{10^8}$
- (2) $\frac{81}{10^8}$
- (3) $\frac{7}{10^7}$
- (4) $\frac{73}{10^8}$

52. The number of the real solutions of the equation: $x|x+3| + |x-1| - 2 = 0$ is

- (1) 5
- (2) 2
- (3) 4
- (4) 3

53. let 729, 81, 9, 1, ... be a sequence and P_n denote the product of the first n terms of this sequence.

If $2 \sum_{n=1}^{40} (P_n)^{\frac{1}{n}} = \frac{3^\alpha - 1}{3^\beta}$ and $gcd(\alpha, \beta) = 1$, then

$\alpha + \beta$ is equal to

- (1) 76
- (2) 74
- (3) 73
- (4) 75

54. The mean and variance of a data of 10 observations are 10 and 2, respectively. If an observation α in this data is replaced by β , then the means and variance becomes 10.1 and 1.99, respectively. Then $\alpha + \beta$ equals

- (1) 10 (2) 15
(3) 20 (4) 5

55. Let $\alpha, \beta \in \mathbb{R}$ be such that function

$$f(x) = \begin{cases} 2\alpha(x^2 - 2) + 2\beta x & , x < 1 \\ (\alpha + 3)x + (\alpha - \beta) & , x \geq 1 \end{cases} \quad \text{be}$$

differentiable at all $x \in \mathbb{R}$. Then $34(\alpha + \beta)$ is equal to

- (1) 84 (2) 48
(3) 36 (4) 24

56. Let $\vec{a} = 2\hat{i} + \hat{j} - 2\hat{k}, \vec{b} = \hat{i} + \hat{j}$ and $\vec{c} = \vec{a} \times \vec{b}$. Let \vec{d} be a vector such that $|\vec{d} - \vec{a}| = \sqrt{11}, |\vec{c} \times \vec{d}| = 3$

and the angle between \vec{c} and \vec{d} is $\frac{\pi}{4}$. Then

$\vec{a} \cdot \vec{d}$ is equal to

- (1) 0 (2) 11
(3) 1 (4) 3

57. Let $f(t) = \int \left(\frac{1 - \sin(\log_e t)}{1 - \cos(\log_e t)} \right) dt, t > 1$. If

$f(e^{\pi/2}) = -e^{\pi/2}$ and $f(e^{\pi/4}) = \alpha e^{\pi/4}$, then α equals

- (1) $-1 - 2\sqrt{2}$ (2) $1 + \sqrt{2}$
(3) $-1 + \sqrt{2}$ (4) $-1 - \sqrt{2}$

58. If $\cot x = \frac{5}{12}$ for some $x \in \left(\pi, \frac{3\pi}{2} \right)$, then

$$\sin 7x \left(\cos \frac{13x}{2} + \sin \frac{13x}{2} \right) + \cos 7x \left(\cos \frac{13x}{2} - \sin \frac{13x}{2} \right) \text{ is equal to}$$

- (1) $\frac{5}{\sqrt{13}}$ (2) $\frac{4}{\sqrt{26}}$
(3) $\frac{1}{\sqrt{13}}$ (4) $\frac{6}{\sqrt{26}}$

59. Let $S = \frac{1}{25!} + \frac{1}{3!23!} + \frac{1}{5!21!} + \dots$ up to 13 terms.

If $13S = \frac{2^k}{n!}, k \in \mathbb{N}$, then $n + k$ is equal to

- (1) 52 (2) 49
(3) 51 (4) 50

60. Let $A(1,0), B(2,-1)$ and $C\left(\frac{7}{3}, \frac{4}{3}\right)$ be three points. If the equation of the bisector of the angle ABC is $\alpha x + \beta y = 5$, then the value of $\alpha^2 + \beta^2$ is

- (1) 8 (2) 5
(3) 10 (4) 13

61. Let the lines

$$L_1 : \vec{r} = \hat{i} + 2\hat{j} + 3\hat{k} + \lambda(2\hat{i} + 3\hat{j} + 4\hat{k}), \lambda \in \mathbb{R} \quad \text{and}$$

$$L_2 : \vec{r} = (4\hat{i} + \hat{j}) + \mu(5\hat{i} + 2\hat{j} + \hat{k}), \mu \in \mathbb{R} \quad ,$$

intersect at the point R . Let P and Q be the points lying on lines L_1 and L_2 , respectively,

such that $|\overline{PR}| = \sqrt{29}$ and $|\overline{PQ}| = \sqrt{\frac{47}{3}}$. If the

point P lies in the first octant, then $27(\overline{QR})^2$ is equal to

- (1) 360 (2) 348
(3) 340 (4) 320

62. Let R be a relation defined on the set $\{1, 2, 3, 4\} \times \{1, 2, 3, 4\}$ by

$$R = \{((a, b), (c, d)) : 2a + 3b = 3c + 4d\} . \text{ Then the}$$

number of elements in R is

- (1) 18 (2) 15
(3) 6 (4) 12

63. Let a circle of radius 4 pass through the origin O , the points $A(-\sqrt{3}a, 0)$ and $B(0, -\sqrt{2}b)$, where a and b are real parameters and $ab \neq 0$. Then the locus of the centroid of ΔOAB is a circle of radius

- (1) $\frac{8}{3}$ (2) $\frac{5}{3}$
(3) $\frac{11}{3}$ (4) $\frac{7}{3}$

64. Let each of the two ellipses

$$E_1 : \frac{x^2}{a^2} + \frac{y^2}{b^2} = 1, (a > b) \text{ and}$$

$$E_2 : \frac{x^2}{A^2} + \frac{y^2}{B^2} = 1, (A < B) \text{ have eccentricity } \frac{4}{5} .$$

Let the lengths of the latus recta of E_1 and E_2 be l_1 and l_2 , respectively, such that $2l_1^2 = 9l_2$. If the distance between the foci of E_1 is 8, then the distance between the foci of E_2 is

- (1) $\frac{8}{5}$ (2) $\frac{96}{5}$
(3) $\frac{32}{5}$ (4) $\frac{16}{5}$

65. Consider an A.P.: $a_1, a_2, \dots, a_n; a_1 > 0$. If $a_2 - a_1 = \frac{-3}{4}, a_n = \frac{1}{4}a_1$, and $\sum_{i=1}^n a_i = \frac{525}{2}$, then $\sum_{i=1}^{17} a_i$ is equal to

- (1) 952 (2) 476
 (3) 238 (4) 136

66. If the function

$$f(x) = \frac{e^x (e^{\tan x - x} - 1) + \log_e (\sec x + \tan x) - x}{\tan x - x}$$

is continuous at $x=0$, then the value of $f(0)$ is equal to

- (1) 2 (2) $\frac{3}{2}$
 (3) $\frac{1}{2}$ (4) $\frac{2}{3}$

67. Let $S = \{z \in \mathbb{C} : \left| \frac{z-6i}{z-2i} \right| = 1 \text{ and } \left| \frac{z-8+2i}{z+2i} \right| = \frac{3}{5} \}$.

Then $\sum_{z \in S} |z|^2$ is equal to

- (1) 398 (2) 413
 (3) 385 (4) 423

68. The value of $\frac{\sqrt{3} \operatorname{cosec} 20^\circ - \sec 20^\circ}{\cos 20^\circ \cos 40^\circ \cos 60^\circ \cos 80^\circ}$ is equal to

- (1) 64 (2) 32
 (3) 16 (4) 12

69. If the domain of the function

$$f(x) = \log_{(10x^2 - 17x + 7)} (18x^2 - 11x + 1)$$

is $(-\infty, a) \cup (b, c) \cup (d, \infty) - \{e\}$, then

$90(a+b+c+d+e)$ equals:

- (1) 316 (2) 307
 (3) 177 (4) 170

70. Let A_1 be the bounded area enclosed by the curves $y = x^2 + 2, x + y = 8$ and y -axis that lies in the first quadrant. Let A_2 be the bounded area enclosed by the curves $y = x^2 + 2, y^2 = x, x = 2$, and y -axis that lies in the first quadrant. Then $A_1 - A_2$ is equal to

- (1) $\frac{2}{3}(3\sqrt{2}+1)$ (2) $\frac{2}{3}(\sqrt{2}+1)$
 (3) $\frac{2}{3}(2\sqrt{2}+1)$ (4) $\frac{2}{3}(4\sqrt{2}+1)$

Integer Type Questions

71. The number of 3×2 matrices A , which can be formed using the elements of the set $\{-2, -1, 0, 1, 2\}$ such that the sum of all the diagonal elements of $A^T A$ is 5, is _____

72. Let $(2\alpha, \alpha)$ be the largest interval in which the function $f(t) = \frac{|t+1|}{t^2}, t < 0$, is strictly decreasing. Then the local maximum value of the function

$$g(x) = 2 \log_e (x-2) + \alpha x^2 + 4x - \alpha, x > 2$$

73. Let a differentiable function f satisfy the equation $\int_0^{36} f\left(\frac{tx}{36}\right) dt = 4\alpha f(x)$. If $y = f(x)$ is a standard parabola passing through the points $(2, 1)$ and $(-4, \beta)$, then β^α is equal to _____.

74. The number of numbers greater than 5000, less than 9000 and divisible by 3, that can be formed using the digits 0, 1, 2, 5, 9, if the repetition of the digits is allowed, is _____

75. Let a line L passing through the point $P(1, 1, 1)$ be perpendicular to the lines $\frac{x-4}{4} = \frac{y-1}{1} = \frac{z-1}{1}$ and $\frac{x-17}{1} = \frac{y-71}{1} = \frac{z}{0}$. Let the line L intersect the yz -plane at the point Q . Another line parallel to L and passing through the point $S(1, 0, -1)$ intersects the yz -plane at the point R . Then the square of the area of the parallelogram $PQRS$ is equal to _____.